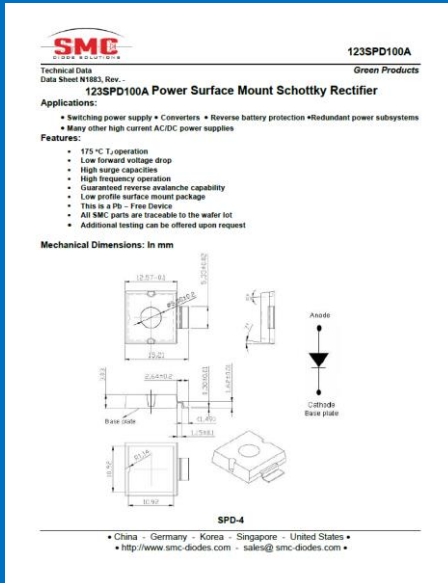


Download the Datasheet...



[here.](#)

### Other Parts on our Commercial/Industrial Linecard:

**Q-TECH** – Oscillators OCXO, MCXO, TCXO, VCXO, XO, SAW, Class B+ Parts (EAR99)

**AEM** – SolidMatrix & AirMatrix Fuses  
GcDiode ESD Suppressors, Varistors, & Chip Inductors & Beads, PMS Resettable Fuses

For more Information or Datasheets, please contact:

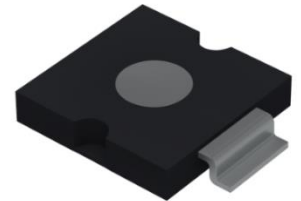
### Protec GmbH

Rosenheimer Landstraße 117  
83229 Ottobrunn-Riemerling  
Phone: 089/6602923  
eMail: [sales@protec-semi.de](mailto:sales@protec-semi.de)  
Web: <http://www.protec-semi.de>

## SMC – New High Power Surface Mount Schottky Rectifier 123SPD100A

### Ideal for High Power, High Frequency and Energy Sensitive Applications

The 123SPD100A is a high current, power Schottky rectifier packaged in the thermally efficient low profile SPD-4 surface mount outline. The device has a robust continuous forward current rating of 120A, a reverse voltage capability of 100V and a very high single cycle surge rating of 1650A which is critical in reactively loaded circuits. The device optimizes energy efficiency by offering an extremely low forward voltage of 0.72V maximum when measured at the full rated forward current of 120A. The combination of high forward current rating, high reverse voltage rating and very low conduction and switching losses makes this device ideal for high power, high frequency and energy sensitive applications.



### Features

- High current density of 120A average forward, IO, continuous (TJ=25oC)
- High reverse voltage capability of 100V
- Ultralow forward voltage (0.72V typ. @ 120A, TJ=125oC)
- High avalanche energy capability (11.25mJ)
- Very high forward surge capability (1650A)
- Thermally efficient package

### Applications

- Welding Units
- Solar Inverters
- Reverse polarity protection
- ORing circuits in redundant power systems
- Output rectification in high frequency switching supplies
- DC / DC converters
- Voltage clamping circuits

### About SMC

Excellent quality and competitive prices are unique features from SMC. Full Traceability per Mil-Standard, FIT (Failure in Time) Rate Data, Full-Process-Control and their own Wafer Fab are advantages that other commercial manufacturers do not have. SMC is ISO 9001:2008, ISO 14001:2004 and TS16949 certified.